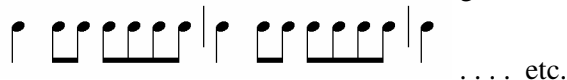


# Virginia Band & Orchestra Directors Association

## All-Virginia Audition Requirements: Wind and Percussion Students

**1. Major Scales (20% of Total Score)** Please note the following scale requirements:

- A. All major scales are required and will be memorized
- B. Scales are called in **KEY** name, not **CONCERT PITCH**
- C. Scales are to be played in as many complete octaves as possible on the instrument
- D. Articulation is legato tongue up and down
- E. Tempo is Quarter Note @ **MM 100**
- F. The following rhythm will be used for all octaves: quarter note (tonic) followed by eighth notes.



- **Snare Drum:** This section is used for rudimental score. Rudiments will be selected from the NARD/Ludwig 26 standard drum rudiments. These are to be played **open-close-open**.
- **Timpani:** This section is to evaluate tuning skills. The following pitch sources may be used: pitch pipe, tuning fork or mallet instrument. Students are allowed **45 seconds** for tuning and study of the sight-reading.
- **Percussionists may use their own xylophone, marimba or school timpani, or use equipment provided by host site.**

**2. Chromatic Scale (20% of Total Score)** Slur ascending, tongued descending (except trombones and percussion). Instruments play their chromatic scales in 16<sup>th</sup> notes at the tempo given below (quarter note = one beat, see Manual, page 98):

<b>Piccolo</b>	D below staff to altissimo C. (2 octaves + 7 <sup>th</sup> ) Minimum tempo MM=120
<b>Flute</b>	C below staff to altissimo C. (3 octaves) Minimum tempo MM=120
<b>Oboe</b>	C below staff to E above high C. (2 octaves + 3 <sup>rd</sup> ) Minimum tempo MM=120
<b>Bassoon</b>	B flat below the staff to high B flat one octave above staff. Minimum tempo MM=120
<b>E♭ Clarinet</b>	Same as B♭ Clarinet (see below)
<b>B♭ Clarinet</b>	E below staff to G above high C. (3 octaves + 3 <sup>rd</sup> ) Minimum tempo MM=120
<b>Alto Clarinet</b>	E below staff to E above high C. (3 octaves) Minimum tempo MM=120
<b>Bass Clarinet</b>	E below staff to C above staff. (2 octaves + 6 <sup>th</sup> ) Minimum tempo MM=120
<b>Contra - Clarinet</b>	E below staff to G# above staff. (2 octaves + 3 <sup>rd</sup> ) Minimum tempo MM=96
<b>Alto Saxophone</b>	B flat below staff to F above staff (2 octaves + 5 <sup>th</sup> - hold high F for 2 counts prior to descending). Min. tempo MM=120
<b>Tenor Sax</b>	Same as Alto Sax (see above)
<b>Bari-Sax</b>	Same as Alto Sax (see above) Minimum tempo MM=96
<b>Cornet/Trumpet</b>	G below staff to C above staff (2 octaves + 4 <sup>th</sup> ). Minimum tempo MM=120
<b>Horn</b>	G below staff to G above staff. Minimum tempo MM=120
<b>Tenor Trombone</b>	Low F to 4 <sup>th</sup> ledger line B flat (2 octaves + 4 <sup>th</sup> ). Legato tongue ascending, staccato tongue descending. Minimum tempo MM=96
<b>Bass Trombone</b>	B flat below staff to F above staff (2 octaves + 5 <sup>th</sup> ). Legato tongue ascending, staccato tongue descending. Minimum tempo MM=96
<b>Euphonium (TC)</b>	G below staff to C above staff (2 octaves + 4 <sup>th</sup> ). Minimum tempo MM=120
<b>Euphonium (BC)</b>	Low F to 4 <sup>th</sup> ledger line B flat (2 octaves + 4 <sup>th</sup> ). Minimum tempo MM=120
<b>Tuba</b>	Lowest F to highest B flat (2 octaves + 4 <sup>th</sup> ). Minimum tempo MM=112
<b>Mallets</b>	Full range of instrument. Minimum tempo MM=120
<b>Snare Drum</b>	A) long roll (rudiment #1) B) Concert Roll (closed or “buzz”), sustained sound from <i>pp-ff-pp</i>

**3. Prepared Etude (30% of total score)** Students perform the prepared etude for their instrument as posted on the VBODA website.

**4. Sight-Reading (30% of total score)** Students are given 1 sight-reading exercise. Students are given 30 seconds to study the exercise prior to playing.